



Instruction Manual

LeCroy AP034

Active Differential Probe

REVISION D — JANUARY 2000



Warranty

LeCroy warrants this oscilloscope accessory for normal use and operation within specifications for a period of three years from the date of shipment. Calibration after each 12 month interval is recommended to ensure performance to specification. Spare parts, replacement parts and repairs are warranted for 90 days. The instrument's firmware has been thoroughly tested and thought to be functional, but is supplied without warranty of any kind covering detailed performance.

In exercising its warranty, LeCroy will repair or, at its option, replace any assembly returned within its warranty period to the Customer Service Department or an authorized service center. However, this will be done only if the product is determined by LeCroy's examination to be defective because of workmanship or materials, and the defect is not caused by misuse, neglect, accident, abnormal conditions of operation, or damage resulting from attempted repair or modifications by a non-authorized service facility.

The customer will be responsible for the transportation and insurance charges for the return of products to the service facility. LeCroy will return all products under warranty with transportation prepaid.

This warranty replaces all other warranties, expressed or implied, including but not limited to any implied warranty of merchantability, fitness, or adequacy for any particular purposes or use. LeCroy shall not be liable for any special, incidental, or consequential damages, whether in contract or otherwise.

Corporate Headquarters

700 Chestnut Ridge Road
Chestnut Ridge, NY 10977-6499
Tel: (914) 578-6020, Fax: (914) 578-5985

Internet: www.lecroy.com

Copyright 2000, LeCroy Corporation. All rights reserved. Contents of this publication may not be reproduced in any form without written permission of LeCroy Corporation.

LeCroy, Easywave, SMART Trigger, PowerMeasure, and ProBus are registered trademarks of LeCroy Corporation.

AP034-OM-E

Rev D

0100





Table of Contents

Overview

Description 1-1
Applications 1-1
Conventions used in this Manual 1-2

Safety Information

Operator Safety 2-1

Operation

Connecting the Probe to the Test Instrument 3-1
Connecting the Probe to the Test Circuit 3-1
Probe Input Loading 3-4
Grounding the Probe 3-4
Selecting the Proper Range 3-6
Operation with LeCroy Oscilloscopes 3-7
AP034 Use with the ADPPS Power Supply..... 3-8
Adding Offset 3-10
Autobalance 3-11
Designing Test Fixtures for the AP033 Probe 3-12

Reference Information

Differential Mode and Common Mode 4-1
Differential Mode Range and Common Mode Range 4-1
Common Mode Rejection Ratio 4-2

Care and Maintenance

Cleaning 5-1
Calibration Interval 5-1
Service Strategy 5-1
Troubleshooting 5-1
 Trace Off Scale 5-1



Incorrect Frequency Response	5-2
DC Errors	5-3
Poor Common Mode Rejection	5-3
Returning a Defective Probe	5-4
Replacement Parts	5-5
Matching Procedure for ± 10 Plug-On External Attenuator	5-8
Equipment Required	5-8
Procedure.....	5-9

Performance Verification

Test Equipment Required	6-1
Preliminary Procedure.....	6-3
Procedure.....	6-3
Check Gain Accuracy.....	6-4
Check High Frequency CMRR.....	6-5
Check Low Frequency CMRR.....	6-8
Performance Verification Test Record	6-11

Adjustment Procedure

Introduction	7-1
Test Equipment Required	7-2
Preliminary Procedure.....	7-4
Procedure.....	7-7
Adjust Coarse DC Balance (R226)	7-7
Adjust Fine DC Balance (R304)	7-8
Adjust Low Frequency CMRR (R7).....	7-9
Adjust Offset (R330)	7-11
Adjust Gain (R322C)	7-13
Adjust Final Attenuator Compensation (C17)	7-14
Adjust Final Attenuator CMRR (C18A).....	7-15
Assemble Probe and Amplifier.....	7-16
Attenuator Matching and Final Check	7-17

Specifications

Nominal Characteristics 8-1
Warranted Electrical Characteristics 8-2
Typical Electrical Characteristics 8-3
General Characteristics 8-5
Compliance and Certifications 8-6
Operator Safety 8-6
Standard Accessories 8-7
Optional Accessories 8-7
Oscilloscope Software Compatibility 8-7

#



BLANK PAGE



Overview

DESCRIPTION

The AP034 is a wide-band, active differential probe. The probe features low noise, low input capacitance, high common mode rejection, and Field Effect Transistor (FET) buffered inputs in the probe head. The user-selectable offset gives the probe the flexibility to measure a large range of signal types. Plug-on attenuators and AC coupling accessories further extend the application range. Included interconnect accessories allow connection to surface mount and through-hole components with minimal signal degradation. The input receptacles in the probe head are compatible with standard 0.025 in. (0.635 mm) square pins, which provide a convenient, low-cost method of creating device characterization test fixtures.

The probe is powered directly from a LeCroy oscilloscope through the ProBus interface. The ProBus interface also allows local control of the probe through the oscilloscope user interface and remote control through the interface buses, (GPIB, RS-232). The optional ADPPS power supply allows the AP034 to be used with other instruments such as spectrum analyzers, network analyzers, and oscilloscopes without ProBus interface.

APPLICATIONS

The AP034 Active Differential Probe is ideal for acquiring high-speed differential signals such as those found in disk drive read channels, differential LAN, video, etc. The probe can be used with spectrum analyzers to acquire signals in some RF systems (for example, balanced IF mixers in hand-held cellular telephones). The high impedance characteristics of both inputs allow you to use the probe as an FET probe to make single-ended measurements in digital systems without introducing a ground loop, as a conventional FET probe would.



CONVENTIONS USED IN THIS MANUAL

The following conventions may appear in this manual:

Note

A Note contains general information relating to the use of the product.

Caution

A Caution contains information that should to be followed to avoid possible damage to the instrument or the device under test.

WARNING

A Warning alerts you to potential injury to yourself. Failing to adhere to the statement in a WARNING message could result in bodily injury.

The following symbol may appear on the product:



This symbol refers you to additional information contained in this manual. The corresponding information in the manual is denoted with the same symbol.

CAT I Overvoltage Installation Category per EN 61010-1

#



Safety Information

OPERATOR SAFETY

The AP034 Active Differential Probe is intended to be used only with instruments that are connected to earth ground through the input BNC connector. When you are using the probe with an ADPPS Power Supply Adapter, make sure the adapter is connected to a BNC connector that is grounded by the test instrument before connecting the probe inputs to the test circuit.

Do not use the probe in wet or explosive atmospheres. Remove any contamination from the probe housing before connecting the probe inputs to any circuit. Make sure that the surface of the probe head is completely dry before connecting the inputs.

Use of the probe, and/or the instrument it is connected to, in a manner other than that specified may impair the protection mechanisms.

Do not use the probe if any part is damaged. All maintenance should be referred to qualified service personnel.

#



BLANK PAGE



Operation

Caution

The input circuits in the AP034 Active Differential Probe incorporate components that protect the probe from damage resulting from electrostatic discharge (ESD). Keep in mind that this is an active probe, and it should be handled carefully to avoid damage. When using the AP034 Active Differential Probe, you are advised to take precautions against potential instrument damage due to ESD.

CONNECTING THE PROBE TO THE TEST INSTRUMENT

When you are using the AP034 Active Differential Probe with a LeCroy Oscilloscope equipped with ProBus, attach the probe output connector to the oscilloscope input connector. The oscilloscope will recognize the probe, set the oscilloscope input termination to 50 Ω , and activate the probe control functions in the user interface.

To use the AP034 Active Differential Probe with instrumentation not equipped with a ProBus interface, it is necessary to use the ADPPS Power Supply. Attach the ADPPS connector to the probe output connector. The output connector of the ADPPS is a standard male BNC that can be directly connected to another instrument. If necessary, the output of the ADPPS can be interconnected with a 50 Ω coaxial cable. To minimize the effects of skin loss, this cable should be 1 m or less in length. The AP034 Active Differential Probe is designed to drive a 50 Ω load. The gain will be uncalibrated if the output is not correctly terminated. If you are using the probe with an instrument with a high input impedance, place a 50 Ω BNC in-line terminator on the instrument input before attaching the ADPPS.

CONNECTING THE PROBE TO THE TEST CIRCUIT

At the probe tip, two inputs and a ground connection are available for connecting the probe to a circuit under test. For accurate measurements, both the + and – inputs must always be



connected to the test circuit. The ground connection is optional. Positive voltages applied to the + input relative to the – input will deflect the oscilloscope trace toward the top of the screen.

To maintain the high performance capability of the probe in measurement applications, user care in connecting the probe to the test circuit. Increasing the parasitic capacitance or inductance in the input paths may introduce a “ring,” or slow the rise time of fast signals. To minimize these effects, use the shortest length possible when connecting the probe to the circuit under test. Input leads that form a large loop area (even shielded coaxial cables) will pick up any radiated magnetic field that passes through the loop, and may induce noise in the probe inputs. Because this signal will appear as a differential mode signal, the probe’s common mode rejection will not remove it. You can greatly reduce this effect by using short interconnection leads, and twisting them together to minimize the loop area.

High common mode rejection requires precise matching of the relative gain or attenuation in the + and – input signal paths. Mismatches in additional parasitic capacitance, inductance, delay, and a source impedance difference between the + and – signal paths will lower the common mode rejection ratio. Therefore, it is desirable to use the same length and type of wire and connectors for both input connections. When possible, try to connect the inputs to points in the circuit with approximately the same source impedance.

If AC coupling is desired, install the AC coupling accessory on the probe tip before connecting it to the test circuit. The low-frequency cutoff (–3 dB point) of the AC coupler is approximately 16 Hz.

If the voltage in the test circuit exceeds the probe’s capability, add the external ÷10 or ÷20 attenuator* to the probe tip. If both the external attenuator and AC coupler are used, install the attenuator on the probe tip first, then install the AC coupler on the attenuator input.

*** Note**

The external attenuators are precisely adjusted during manufacturing to match the

characteristics of the input of the probe with which they were shipped. The input characteristics of the external attenuator itself do not exactly match those of the probe. Therefore, using the ± 10 and ± 20 attenuators at the same time is not recommended. The scale factor encoding system will not operate correctly with both attenuators installed simultaneously.

The input characteristics of the AP034 1 GHz Active Differential Probe are significantly different than those of the AP033 500 MHz Active Differential Probe. The external attenuators are not interchangeable. The external attenuators currently supplied with the probes are labeled with the appropriate model number. The attenuators supplied with model AP033 probes prior to the introduction of the AP034 did not include the model number on the label. When using an external attenuator with the AP034 Active Differential Probe, make sure it is labeled "AP034."

Interchanging non-compatible attenuators will not damage the probes; however, the transient response of the measured signals will be significantly in error.

In addition to being compatible with the included lead set, the probe input connectors will mate with standard 0.025 in. (0.635 mm) square pins in any rotational orientation. To avoid damaging the input connectors, do not attempt to insert connectors or wire larger than 0.036 in. (0.91 mm) in diameter. Avoid rotating square pins after they are inserted into the input connectors.

The included accessories simplify the task of connecting the probe to the test circuit:

- Use the small (0.5 mm) mini clips with the flexible lead set when connecting to fine-pitch surface mount IC leads.



AP034 Active Probe

- The larger (0.8 mm) mini clips can be used to connect to through-hole leaded components.
- The offset round pins can be used for hand-held probing applications. Reposition the pins by rotating them to obtain the required spacing.

PROBE INPUT LOADING

Attaching any probe to a test circuit will add some loading. In most applications, the high impedance of the AP034 Active Differential Probe inputs imparts an insignificant load to the test circuit. However at very high frequencies, the capacitive reactance of the probe's input capacitance may load the circuit enough to affect measurement accuracy. The equivalent model of the probe input circuits is shown below:

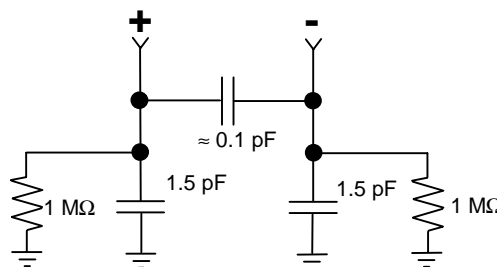
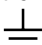


Figure 1. AP034 Equivalent Input Model

GROUNDING THE PROBE

The single lead along with one of the larger (0.8 mm) mini clips can be used to ground the probe to the test circuit. Insert the pin end of the lead into the receptacle marked: 

Note

Do not use the attenuator encoding receptacle (unmarked socket near the – input) to ground the probe. Connecting to the encoding receptacle will not provide adequate grounding, and may result in incorrect scale factor indication.

In most cases it is not necessary to ground the probe to the circuit under test. However, if the test circuit is isolated from earth ground, it is usually necessary to connect the probe ground to a point in the circuit. Grounding test circuits that are referenced to earth ground may improve the fidelity of high-frequency components in the waveforms. The potential for improvement with grounding will vary depending on the common mode source impedance. However, connecting the probe ground to a circuit that is referenced to earth ground can create a ground loop that may add noise to low-amplitude signals*. Rejection of high-frequency common mode signals is improved when the probe head is ungrounded.

The best recommendation for connecting or not connecting the probe ground is to try both configurations and select the one that performs the best.

Note

The AP034 Active Differential Probe transmits the measured signal differentially through the probe cable. This essentially eliminates signal degradation from ground loop effects within the probe. However, creating a ground loop may introduce signal distortions in the test circuit itself, or in any coaxial cable between the ADPPS power supply and the test instrument.



SELECTING THE PROPER RANGE

The AP034 Active Differential Probe has a fixed gain of X1 (unity). Use of the $\div 10$ or $\div 20$ external attenuators reduces the amplitude of the input signal when it is necessary to extend the dynamic operating range of the probe. Attenuating the input signal increases both the differential mode range and common mode range of the probe.

Refer to the block diagram below.

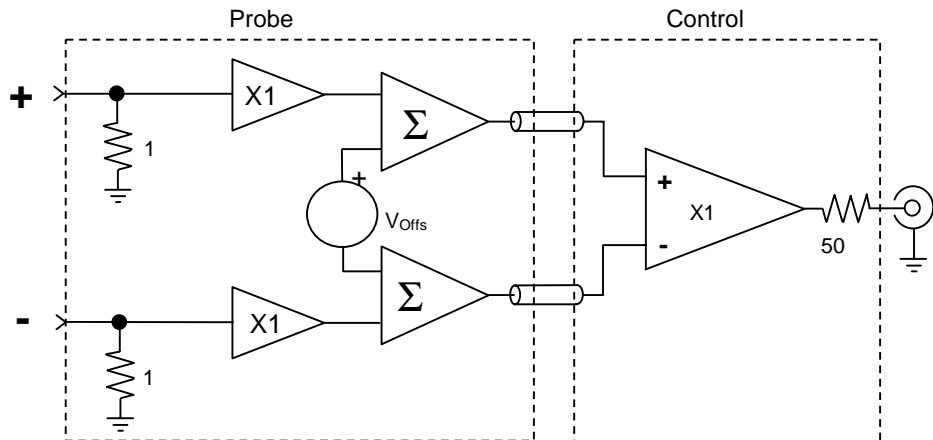


Figure 2. AP034 Block Diagram

By using the plug-on attenuator, you can extend the attenuation range to $\div 20$. Do not use the $\div 10$ and $\div 20$ plug-on attenuators simultaneously. The maximum ranges are given in the following table:

Table 1. AP034 Dynamic ranges and input capacitance at different attenuator settings

	$\div 1$ Attenuation (Probe Only)	$\div 10$ Attenuation	$\div 20$ Attenuation
Common Mode Range	± 16 V	± 42 V	± 42 V
Differential Mode Range *	± 400 mV	± 4 V	± 8 V

*Offset moves the center point of this range.

When using a differential probe or amplifier, be careful to avoid exceeding the common mode range. Because the common mode signal is rejected by the differential probe, and is not displayed, changes in the amplitude of the common mode component are not apparent to the user. Exceeding the common mode range may introduce distortion into the AP034 output.

Circuitry in the probe detects the presence of either attenuator, and displays the effective gain of the probe on the probe front panel.

OPERATION WITH LECROY OSCILLOSCOPES

When the AP034 probe is connected to a LeCroy oscilloscope equipped with ProBus interface, the displayed scale factor will be adjusted to account for the effective gain of the probe. The channel **OFFSET** knob will control the probe offset, rather than the offset at the oscilloscope input. The probe control menu can be activated by pressing the **COUPLING** button while the channel to which the probe is attached is selected.

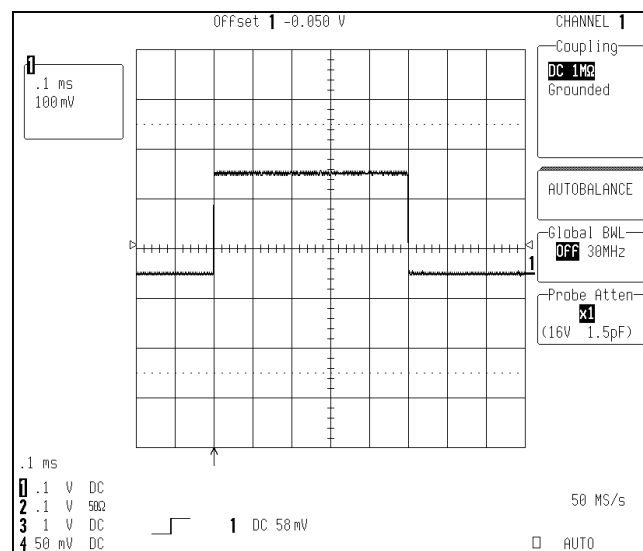


Figure 3. AP034 Probe Control Menu



AP034 Active Probe

When the AP034 Active Differential Probe is first connected to the oscilloscope, the following message will appear: “WARNING: Probe offset buttons are locked.” This alerts you that offset control must be made through the oscilloscope, rather than through the buttons located on the probe. It does not indicate a failure in the probe or oscilloscope.

Note:

Correct display of scale factor with the $\div 20$ attenuator installed and correct operation of probe offset require that software version 8.1 or higher be loaded. Refer to the manual section “Oscilloscope Software Compatibility” for additional information.

AP034 USE WITH THE ADPPS POWER SUPPLY

The optional ADPPS Power Supply allows the AP034 Active Differential Probe to be used with instruments that are not equipped with the ProBus interface. When used with the ADPPS, the AP034 must be terminated into 50 Ω . If the test instrument input impedance is not 50 Ω , insert a 50 Ω in-line terminator between the ADPPS and the instrument input. If a coaxial extension cable is used, the terminator should be located at the instrument end of the cable. Note that the additional parasitic losses of extension cables may reduce the usable bandwidth of the system below the AP034 specification.

To prevent signal distortion, it is necessary to keep the AP034 output less than 400 mV at all times.

With the ProBus interface (see note on following page), the oscilloscope **OFFSET** control actually controls the AP034 offset. Without the ProBus, it is acceptable to use the oscilloscope to position the waveform at high sensitivities, but it is a practice that can lead to erroneous measurements when the probe output exceeds ± 400 mV. Therefore, when the ADPPS is used, it is preferable to use the AP034 offset function to perform all waveform positioning.

The AP034 offset allows you to measure signals up to 2.0 V (1.6 V of offset plus 400 mV of output signal). With accessory plug-on attenuators, the effective offset is increased, and input signals of 20 V ($\div 10$) or 40 V ($\div 20$) may be viewed. The peak

signal that can be viewed at any equivalent scale factor is the Input Differential Mode Range plus the offset used. See **Adding Offset** on the following page.

When using the AP034 with the ADPPS power supply on oscilloscopes without ProBus interface, use the following table to select the desired effective volts per division and determine the offset available.

Table 2. Recommended AP034 and Oscilloscope settings to obtain desired equivalent Volts/Division

Equivalent Scale Factor	Oscilloscope Scale Factor	AP034 Attenuation	Common Mode Range	Input Differential Mode Range	Maximum Offset	Maximum Observable Signal with Offset	Input Noise (nV/ $\sqrt{\text{Hz}}$), Typical
2 mV/Div	2 mV/Div	$\div 1$	$\pm 16\text{V}$	$\pm 8\text{ mV}^2$	$\pm 1.6\text{ V}$	$\pm 1.608\text{ V}$	35
5 mV/Div	5 mV/Div	$\div 1$	$\pm 16\text{ V}$	$\pm 20\text{ mV}^2$	$\pm 1.6\text{ V}$	$\pm 1.620\text{ V}$	35
10 mV/Div	10 mV/Div	$\div 1$	$\pm 16\text{ V}$	$\pm 40\text{ mV}^2$	$\pm 1.6\text{ V}$	$\pm 1.640\text{ V}$	35
20 mV/Div	20 mV/Div	$\div 1$	$\pm 16\text{ V}$	$\pm 80\text{ mV}^2$	$\pm 1.6\text{ V}$	$\pm 1.680\text{ V}$	35
50 mV/Div	50 mV/Div	$\div 1$	$\pm 16\text{ V}$	$\pm 200\text{ mV}^2$	$\pm 1.6\text{ V}$	$\pm 1.800\text{ V}$	35
100 mV/Div	100 mV/Div	$\div 1$	$\pm 16\text{ V}$	$\pm 400\text{ mV}^3$	$\pm 1.6\text{ V}$	$\pm 2.0\text{ V}$	35
200 mV/Div	20 mV/Div	$\div 10^1$	$\pm 42\text{ V}$	$\pm 800\text{ mV}^2$	$\pm 16\text{ V}$	$\pm 16.8\text{ V}$	350
500 mV/Div	50 mV/Div	$\div 10^1$	$\pm 42\text{ V}$	$\pm 2\text{ V}^2$	$\pm 16\text{ V}$	$\pm 18\text{ V}$	350
1 V/Div	100 mV/Div	$\div 10^1$	$\pm 42\text{ V}$	$\pm 4\text{ V}^3$	$\pm 16\text{ V}$	$\pm 20\text{ V}$	350
2 V/Div	100 mV/Div	$\div 20^1$	$\pm 42\text{ V}$	$\pm 8\text{ V}^3$	$\pm 32\text{ V}$	$\pm 40\text{ V}$	700

- ¹ Attenuation obtained using the external $\div 10$ or $\div 20$ attenuator.
- ² Input differential mode range displayed is limited by ± 4 divisions of vertical scale on oscilloscope.
- ³ Limited by probe output and ± 4 divisions of vertical scale on oscilloscope. Oscilloscope OFFSET and POSITION must be set to zero.



ADDING OFFSET

The AP034 Active Differential Probe has true differential offset capability. This allows you to remove a DC bias voltage from the differential input signal while maintaining DC coupling. By using probe offset rather than the **POSITION** control on the oscilloscope, the full dynamic range of the probe remains centered around the offset level.

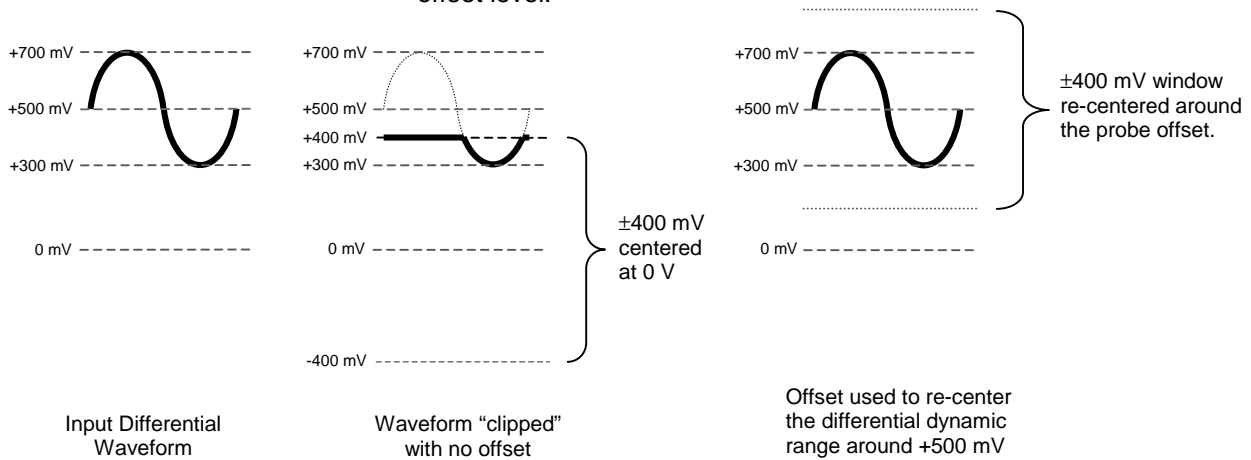


Figure 4. Effect of Differential Offset

When the AP034 Active Differential Probe is used with a LeCroy oscilloscope equipped with ProBus interface, the probe offset can be controlled with the channel **OFFSET** knob.* The buttons on the probe housing will be disabled.

When used with the ADPPS Power Supply on instruments that lack ProBus support, offset can be controlled with the buttons on the probe's front panel. The offset can be returned to zero at any time by briefly pressing both the **↑** and **↓** **OFFSET** buttons at the same time. Pressing both the **↑** and **↓** **OFFSET** buttons for more than 2 seconds will initiate an Autobalance cycle.

*Note

*Probe offset is controlled with the channel **OFFSET** knob in oscilloscope software versions 8.1.0 or higher. The current offset value is*

*displayed above the graticule for a few seconds after a change is made by turning the knob (refer to Figure 3). In prior software versions, the channel **OFFSET** knob adjusted the offset of the oscilloscope input rather than the probe offset. When the AP034 Active Differential Probe is used with LeCroy oscilloscopes with older software versions, it is important that the channel offset (controlled by the channel **OFFSET** knob) remain set to 0.0000 V. Moving the displayed waveform with the channel offset rather than probe offset will not re-center the dynamic operating range of the probe. Offsetting the trace with the oscilloscope channel offset introduces the possibility of erroneous waveforms that result from overloading the probe.*

AUTOBALANCE

The AP034 Active Differential Probe incorporates an Autobalance function to remove the DC offset from the output. Autobalance must be invoked by you. When power is first applied, the probe will return to the internal values resulting from the last Autobalance cycle. For Autobalance to function properly, all signals must be removed from the input.

After several minutes of warmup, or when the probe is exposed to a large shift in ambient temperature, some DC offset drift may occur from thermal effects in the amplifier circuitry. To initiate an Autobalance cycle, remove the probe from the test circuit and select the **AUTOBALANCE** menu selection in the oscilloscope "COUPLING" menu for the channel the probe is connected to. If the probe is being used with the ADPPS power supply, remove the input signal, then push and hold both **OFFSET** buttons for two seconds. The AP034 must be terminated into 50 Ω for successful Autobalance.

Upon successful completion of the Autobalance cycle, all three of the **EFFECTIVE GAIN** indicators will be briefly illuminated. If an input signal is present during auto balance and the routine fails, the **EFFECTIVE GAIN** indicators will not illuminate. The probe will then revert to the offset values resulting from the last



successful completion of the Autobalance cycle. In many situations, this will be adequate to make routine measurements.

DESIGNING TEST FIXTURES FOR THE AP034 PROBE

Often it is desirable to connect the probe directly to user-fabricated test fixtures, such as those used for semiconductor characterization. To facilitate use with custom test fixtures, the input receptacles used in the AP034 probe are compatible with commercially available 0.025 in. (0.635 mm) square pins. The receptacles do not require a specific rotational orientation for the square pin. The dimensions listed below can be used as a layout guide for a test fixture circuit board. The recommended insertion depth of the pins is 0.100 in. (2.5 mm) to 0.200 in. (5.0 mm).

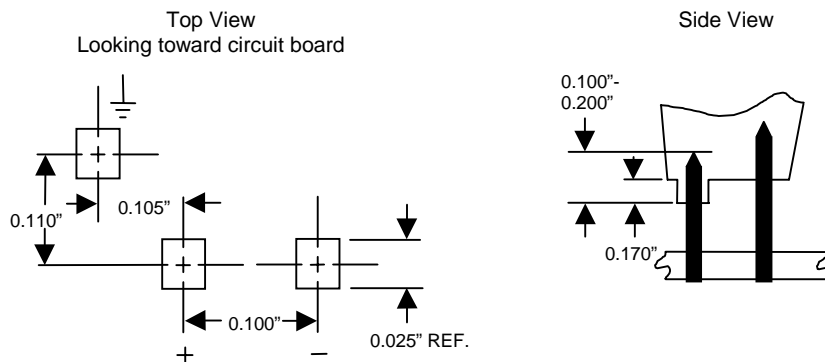


Figure 5. Layout dimensions for test fixtures

#



Reference Information

DIFFERENTIAL MODE AND COMMON MODE

Differential probes amplify the voltage difference that appears between the + and – inputs. This voltage is referred to as the Differential Mode or Normal Mode voltage. The voltage component that is referenced to earth ground, and is identical on both inputs, is rejected by the amplifier. This voltage is referred to as the Common Mode voltage, because it is common to both inputs. The common mode voltage can be expressed as:

$$V_{CM} = \frac{V_{+Input} + V_{-Input}}{2}$$

DIFFERENTIAL MODE RANGE AND COMMON MODE RANGE

The Differential Mode Range is the maximum signal that can be applied between the + and – inputs without overloading the probe amplifier, resulting in “clipping” or distortion of the waveform measured by the oscilloscope.

The Common Mode Range is the maximum voltage with respect to earth ground that can be applied to either input. Exceeding the common mode range can result in unpredictable results. Because the Common Mode signal is normally rejected, and is not displayed on the oscilloscope, you need to be careful to avoid accidentally exceeding the common mode range.

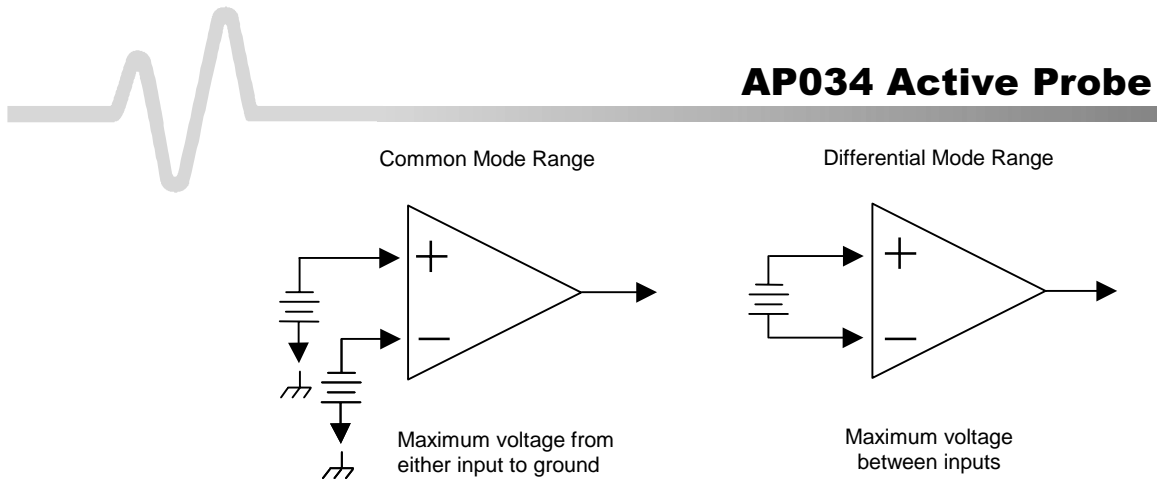


Figure 6. Common Mode and Differential Mode Range

COMMON MODE REJECTION RATIO

The ideal differential probe or differential amplifier would amplify only the differential mode voltage component and reject all of the common mode voltage component. Real differential probes and amplifiers are not perfect, and a small portion of the common mode voltage component does appear in the output. Common Mode Rejection Ratio (CMRR) is the measure of how much the probe or amplifier rejects the common mode voltage component. CMRR is equal to the differential mode gain (or normal gain) divided by the common mode gain. Common mode gain is equal to the output voltage divided by the input voltage when both inputs are driven by only the common mode signal. CMRR can be expressed as a ratio (for example, 10000:1) or implicitly in dB (for example, 80 dB). Higher numbers indicate greater rejection (better performance).

The first-order term that determines the CMRR is the relative gain matching between the + and - input paths. To obtain high CMRR values, the input attenuators in a differential probe are precisely matched to each other. The matching includes the DC attenuation as well as the capacitance that determines the AC attenuation. As the frequency of the common mode components increases, the effects of stray parasitic capacitance and inductance in determining the AC attenuation become more pronounced. The CMRR becomes smaller as the frequency increases. Hence, CMRR is usually specified as a plot versus common mode frequency.

The common mode frequency in these plots is assumed to be sinusoidal. In real life applications, the common mode signal is

Reference Information

seldom a pure sine wave. Signals with pulse wave shapes contain frequency components much higher than the repetition rate may suggest. As such, it is very difficult to predict actual performance in the application for CMRR-versus-frequency graphs. The practical application of these graphs is to compare the relative common mode rejection performance between different probes or amplifiers.

#



BLANK PAGE

Care and Maintenance



CLEANING

The exterior of the probe and cable should be cleaned only using a soft cloth moistened with water or isopropyl alcohol. Abrasive agents, strong detergents, or other solvents may damage the probe. Always ensure that the input receptacles are free of debris before connecting accessories.

CALIBRATION INTERVAL

To guarantee accurate performance, you should have the probe calibrated every 12 months. Avoid exposing the probe to extreme mechanical shock and excessive bending of the cable because these may alter the calibration.

SERVICE STRATEGY

The AP034 circuits utilize fine pitch surface mount devices; it is, therefore, impractical to attempt repair in the field. Defective probes must be returned to a LeCroy service facility for diagnosis and exchange. A defective probe under warranty will be replaced with a factory refurbished probe. A probe that is not under warranty can be exchanged for a factory refurbished probe. A modest fee is charged for this service. The defective probe must be returned in order to receive credit for the probe core.

TROUBLESHOOTING

If the probe is not operating properly, the problem may be the way in which it is used. Before assuming the probe is defective, perform the following troubleshooting procedures.

A. Trace Off Scale

This is typically caused by improper offset setting, or by an input signal that exceeds the probe differential or common mode range. Perform the following:

1. Remove the input signal from the probe, return the offset to zero, and Autobalance the probe. Does the trace return to approximately the center of the graticule? If not, proceed to step 7.



2. Set the oscilloscope calibrator to output a 100-mV, 1-kHz square wave. Using the flex lead set, connect the probe + input to the calibrator output signal, leave the – input open. Set the oscilloscope to 50 mV/div and 500 μ s/div. Is the displayed waveform a 100-mV, 1-kHz square wave with the correct polarity?
3. Repeat step 2 with the – input connected to the calibrator and the + input left open. In this case, the displayed waveform should be inverted.
4. Connect both the + input and – input to the calibrator output. Is the trace approximately a flat line near zero volts?
5. If steps 1 to 4 give the correct results, the problem is likely a result of the input signal exceeding the differential or common mode range.
6. Connect both the + input and – input to one of the two input signals. If the trace is off scale, the input signal is probably exceeding the common mode range. Repeat with the other input signal.
7. Is a ProBus Power Supply Overload error message displayed? If so, remove all other ProBus accessories from the oscilloscope. Is the message still displayed? If so, remove the AP034. Is the message still displayed? If so, the oscilloscope should be returned for service.
8. If, after removing the AP034, the Power Supply Overload error message is not displayed, the problem may be either the probe or the oscilloscope. Repeat the test with a different ProBus accessory. If the message does not return with a different accessory, the AP034 may be defective and should be returned for service.

B. Incorrect Frequency Response

Possible causes are a defective probe or oscilloscope, poor connections, or poor grounding. Try the following:

1. Verify that the BW limiting of the oscilloscope is off.

2. Connect the probe to another oscilloscope. If the probe now measures properly, the problem may be in the oscilloscope.
3. If the probe behaves as if it is ac-coupled at high frequency, check for an open input connection.
4. Poor frequency or transient response and AC gain errors may result when one of the two input connections is open.
5. Excessive “ring” and other transient problems can result from excessive lead length. To test this, shorten the input leads to less than 1 cm. If the transient response changes significantly, the lead parasitics are the cause.

C. DC Errors

Incorrect DC gain requires recalibration or factory repair. This can be determined by completing the gain checks in the Performance Verification Procedure.

1. Extremely high source resistance will result in DC gain errors. Check the probe accuracy with the oscilloscope calibrator signal.
2. Verify that the probe is not being overdriven into clipping for its current gain setting.
3. Excessive offset can result from large changes in ambient temperature. Remove the input signal from the probe and repeat the Autobalance cycle. With the Offset set to zero, did the trace return to the center of the graticule?

D. Poor Common Mode Rejection

Use the 1-kHz calibrator signal from the oscilloscope to check common mode rejection. With both the + input and – input connected to the calibrator signal, a flat line at zero volts should be seen on the graticule.

1. Check the probe with the plug-on attenuator installed and removed. If excessive common mode signal appears only when the attenuator is present, the attenuator may need to be rematched to the probe. Use the procedure listed in this section to match the attenuator.
2. If the common mode signal appears when the probe is connected to the test circuit, but not when it is attached to



the calibrator, the problem may be caused by large mismatches in the source impedance. Try connecting both inputs to one of the input signals in the test circuit, then the other. If the common mode signal disappears, try probing lower impedance points within the circuit.

RETURNING A DEFECTIVE PROBE

The procedure for returning a defective probe to be exchanged, is as follows:

Contact your local LeCroy sales representative to find out where to return the product. All returned products should be identified by model and serial number. You should describe the defect or failure, and provide your name and contact number. In the case of products returned to the factory, a Return Authorization Number (RAN) should be used. The RAN can be established by contacting your nearest LeCroy office, or the New York Customer Care Center.

Return shipments should be made prepaid. LeCroy cannot accept COD or Collect Return shipments. We recommend air-freighting. It is important that the RAN be clearly shown on the outside of the shipping package for prompt redirection to the appropriate LeCroy department.

1. Contact your local LeCroy sales or service representative to obtain a Return Authorization Number.
2. Remove all accessories, including all removable cables, from the probe.
3. Pack the probe in its case, surrounded by the original packing material (or equivalent) and box.
4. Label the case with a tag containing:
 - The RAN
 - Name and address of owner
 - Instrument model and serial number
 - Description of the failure mode
5. Package the probe case in a cardboard shipping box with adequate padding to avoid damage in transit.

6. Mark the outside of the box with the shipping address given to you by the LeCroy representative; be sure to add the following:
 - ATTN: <RAN assigned by the LeCroy representative>
 - FRAGILE
7. Insure the item for the replacement cost of the probe.
8. Ship the package to the appropriate address.

REPLACEMENT PARTS

The probe connection accessories, and other common parts can be ordered through the regional customer care centers. Refer to Figure 7 for LeCroy Part numbers. Defective probes can be replaced on an exchange basis. The replacement exchange probe will have been factory repaired, inspected and calibrated to the same standards as a new product. In order to obtain an exchange probe, you must return the defective probe. The returned probe should be sent back to the regional customer care center without any accessories, manual, or case.

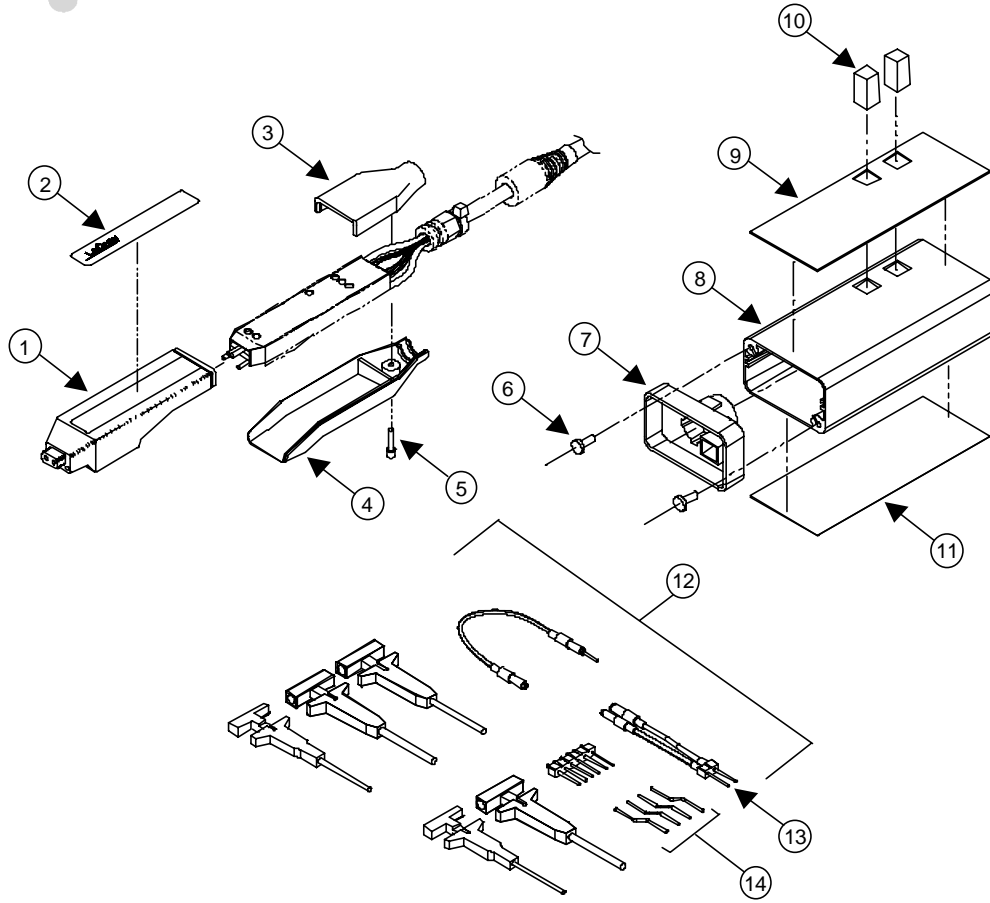


Figure 7. Replceable Parts

Care and Maintenance

Reference	LeCroy Part Number	Description	Rev	Qty.
1	529-304-001	Plastic probe tip housing Top	A	1
2	377-000-007	LeCroy AP034 Probe Tip Label	A	1
3	529-304-003	Plastic probe tip housing End	A	1
4	529-304-002	Plastic probe tip housing Bottom	A	1
5	555-001-000	#2 Allen Screw, Black	A	1
6	554-425-003	Screw, M 2.5x6, self tapping	A	4
7	709-3XX-P53	ProBus End Cap	A	1
8	70A-P03-303	Termination Box	A	1
9	337-000-018	LeCroy Termination Box Label with cutouts	A	1
10	416-090-004	Grey Switch Cap	A	4
11	377-000-008	LeCroy Termination Box Rear Label	A	1
12	PK033	Accessory Kit, AP033/34 without AC Coupler and Attenuator	A	1
13	AP03X-FLEX-LEAD	Flex Lead	B	1
14	AP03X-OFFSET-PIN	Offset Pin, package of 10	B	--
--	AP034-PROBE-FRU	AP034 Probe only Exchange	A	--
--	AP034-DA10	Plug-On Attenuator, ÷10, AP034	A	1
--	AP034-DA20	Plug-On Attenuator, ÷20, AP034	A	1
--	AP03X-AC-COUPLER	Plug-On AC Coupler, AP033/AP034	B	1
--	AP034-OM-E	Instruction Manual, AP034, English	D	1



MATCHING PROCEDURE FOR ± 10 PLUG-ON EXTERNAL ATTENUATOR

The ± 10 and ± 20 Plug-on attenuators provided as standard accessories with the AP034 are calibrated to match the specific probe they are shipped with. Individual probes will have small variations in parasitic capacitance within the input circuits. To obtain maximum common mode rejection performance, the attenuators are calibrated to match a specific probe during the manufacturing process. In order to preserve the maximum Common Mode Rejection, do not interchange external attenuators between probes.

The Plug-on AC coupling adapter is not matched to a specific probe and, therefore, does not need to be matched when interchanged.

If the ± 10 or ± 20 Plug-on attenuators become accidentally mixed between probes, you can use the procedure listed below to restore the compensation match. This adjustment does not affect any of the parameters in the warranted specifications. Therefore, the required test equipment does not need to be calibrated.

Note

The AP033 and AP034 Active Differential Probes have different input capacitance. The ± 10 Plug-on attenuator supplied with model AP033 cannot be properly adjusted for use with model AP034. Make sure that the attenuator is marked "AP034" before attempting this procedure.

EQUIPMENT REQUIRED

Test Oscilloscope

The oscilloscope must support ProBus. Otherwise use a non-ProBus oscilloscope and ADPPS power supply.

Signal Source

Low frequency square wave: frequency from 50 Hz to 5 kHz, amplitude from 1 V to 10 V. The output waveform must have a square corner and flat top with minimum overshoot suitable for adjusting compensation. The generator should have trigger output, or use a BNC Tee connector and separate BNC cable

from the output to provide the trigger signal for the test oscilloscope.

Interconnect Cable

This is for connecting the output of the signal source to the probe. A BNC cable and a pair of small alligator clips or “lead grabber” adapter (Pomona #3788) may be used.

0.025 in. (0.635 mm) Square Pins (3 required). The pins from the header supplied in the probe accessory kit are suitable.

Tools

Flat bladed screwdriver, 0.040 in. (1 mm) wide

Adjustment Tool: 0.025 in. (0.635 mm) square head

Note

You can fabricate the Adjustment Tool by flattening the end of a 0.025 in. (0.635 mm) square pin with a file. Then, using heat from a soldering iron, insert the pin into a short length of rigid plastic tubing to serve as a handle.

PROCEDURE

1. Attach the AP034 to the test oscilloscope. If the test oscilloscope is not equipped with ProBus, use the ADPPS to provide power for the AP034.
2. Attach the $\div 10$ or $\div 20$ Attenuator Adapter to the AP034 probe tip.
3. Insert 0.025 in. (0.635 mm) square pins into the +, -, and \perp input connectors of the Plug-on Attenuator.
4. Attach the interconnect cable to the output of the signal source.
5. Attach the Trigger Out signal from the signal source to the External Trigger Input of the test oscilloscope. If the signal source does not have a separate Trigger Out signal, use a BNC Tee connector in the output. Run one cable to the External Trigger Input of the test oscilloscope. Connect the other to the probe inputs.



6. Using the alligator clips on the end of the interconnect cable, connect the signal source ground to the square pin on the Attenuator Adapter's "–" input. Attach the signal output to the square pin on the Attenuator Adapter's "+" input.
7. Turn on the test oscilloscope. The **EFFECTIVE GAIN** indicator for $\div 10$ or $\div 20$ should be lit. (NOTE: If the **X1 EFFECTIVE GAIN** indicator is lit instead of the $\div 10$ or $\div 20$ indicator, make sure that the plug-on adapter installed on the probe tip is the Attenuator, and not the AC Coupler.)
8. Set the test oscilloscope Volts/Div to 200 mV (for LeCroy oscilloscopes with ProBus) or 20 mV/Div when using the ADPPS with an oscilloscope without scale factor correction; 5 μ s/Div; AUTO trigger mode; Trigger source: External. Set the Bandwidth Limiting to 20–30 MHz and Average the waveform 1:31 to reduce noise.
9. Turn on the signal source. Set the output frequency to approximately 5 kHz. Set the output amplitude to approximately 1 V for matching the $\div 10$ Attenuator Adapter, or 2 V for matching the $\div 20$ Attenuator Adapter.
10. Adjust the test oscilloscope trigger level for a stable trace. If necessary, use the probe offset to position the waveform to show the square corner of the test signal. NOTE: Do not use the oscilloscope offset or position controls to reposition the trace. Many of the signal generators used for compensation calibration only have square corners on one of the two edges of the output waveform. (Rising or falling edge, but not both.) Be sure to display the correct edge for this step.
11. Using the square adjustment tool, adjust the **+LF Comp** (See Figure 8) to achieve the best square corner and flat top of the displayed waveform. Note that the added capacitance of the adjustment tool may change the compensation of the waveform when it is inserted. The correct adjustment is achieved when the best corner is displayed with the adjustment tool removed.

Care and Maintenance

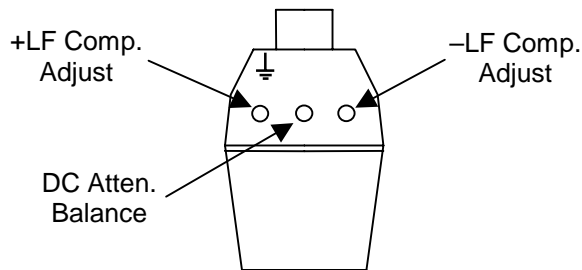


Figure 8. Attenuator Adjustment Locations

12. Move the connections on the interconnect cable so the signal generator ground is connected to the square pin inserted in the ground connector of the Attenuator Adapter. Connect the signal generator output to BOTH the + input and – input square pins in the Attenuator Adapter.
13. Set the signal generator frequency to about 50 Hz, and the output amplitude to about 10 V.
14. Set the test oscilloscope Volts/Div to 20 mV (for LeCroy oscilloscopes with ProBus) or 2 mV/Div when using the ADPPS with an oscilloscope without scale factor correction; and set the time scale to 2 ms/Div. It may be necessary to increase the averaging to 1:127 to remove noise.
15. The displayed waveform is the common mode response. Using the adjustment screwdriver with the flat blade, adjust the DC Atten. Balance (Figure 8) to minimize the amplitude of the flat portions of the displayed waveform. This adjustment only affects the flat portions of the square wave. Do not be concerned with any overshoot at the transitions.
16. Reduce the Test Oscilloscope Averaging weighting to 1:31. Return the Volts/Div to 200 mV (for LeCroy oscilloscopes with ProBus) or 20 mV/Div when using the ADPPS with an oscilloscope without scale factor correction, and the Time/Div to 5 μ s.
17. Return the signal source output frequency to approximately 5 kHz. Set the output amplitude to approximately 1 V for the $\div 10$ Attenuator Adapter, 2 V for the $\div 20$ Attenuator Adapter.
18. Using the 0.025 in. square adjustment tool, adjust the **–LF Comp** (Figure 8) to minimize the amplitude of overshoot



AP034 Active Probe

during the transition of the displayed waveform. It may not be possible to completely eliminate the overshoot. As with the +LF Comp adjustment, the added capacitance of the adjustment tool may change the amplitude of the waveform when it is inserted. The correct adjustment is achieved when the overshoot is minimized with the adjustment tool removed.

#



Performance Verification

This procedure can be used to verify the warranted characteristics of the AP034 Active Differential Probe.

The recommended calibration interval for the model AP034 Active Differential Probe is one year. The complete performance verification procedure should be performed as the first step of annual calibration. You can record test results on a photocopy of the Test Record provided at the end of this section.

You can do the performance verification without removing the instrument covers, exposing yourself to hazardous voltages. Adjustment should only be attempted if a parameter measured in the Performance Verification Procedure is outside of the specified limits.

Adjustment should only be performed by qualified personnel.

TEST EQUIPMENT REQUIRED

Table 3 lists the test equipment and accessories (or their equivalents) that are required to verify the performance of the AP034 Active Differential Probe.

This procedure is designed to minimize the number of calibrated test instruments required.

Only the parameters listed in **boldface** in the “Minimum Requirements” column must be calibrated to the accuracy indicated.

Because the input and output connector types may vary on different brands and models of test instruments, additional adapters or cables may be required.



TABLE 3. List of Required Equipment

Description	Minimum Requirements	Test Equipment Examples
Wide Band Oscilloscope ¹	Minimum 1 GHz bandwidth 2 mV to 5 V scale factors ProBus interface equipped 2% vertical accuracy	LeCroy LC584A
Digital Multimeter	DC: 0.1% accuracy AC: 0.2% accuracy to measure 200 mV and 2 V rms @ 1 kHz 5½ digit resolution	Agilent Technologies 34401A Fluke 8842A-09 Keithley 2001
Function Generator	Sine Wave and Square Wave output waveforms 20 V _{p-p} into 1 MΩ 70 Hz to 10 MHz frequency range	Agilent Technologies 33120A Stanford Research Model DS340 Leader LAG-120B
High Frequency Sine Wave Generator	50 to 500 MHz and 50 kHz Output adjustable from 300 mV to 2 V _{p-p}	Agilent Technologies 8648C
Terminator, in-line, BNC	50 Ω ±2% coaxial termination	Pomona 4119-50
Terminator, precision, BNC	50 Ω ±0.2%	LeCroy TERM-CF01
Attenuator, BNC	50 Ω ±2%, ±10 (20 dB)	Pomona 4108-20dB
BNC coaxial cable (2 required)	male-male BNC, 50 Ω, 36 in.	Pomona 5697-36
Calibration Fixture	ProBus Extension Cable	LeCroy PROBUS-CF01
Calibration Fixture	AP033/AP034 Calibration Fixture	LeCroy AP03x-CF01
Banana Plug adapter	BNC female-to-banana plug	Pomona 1269

Notes

¹ If a LeCroy ProBus equipped oscilloscope is not available, you may use an alternate oscilloscope that meets the other minimum specifications listed, and the model ADPPS power supply, to perform the adjustment procedure. The input

Performance Verification

termination of the oscilloscope must be set to 50 Ω , and the offset or position must remain at center screen.

PRELIMINARY PROCEDURE

1. Connect the AP034 Active Differential Probe to the female end of the ProBus Extension Cable. Connect the male end of the ProBus extension cable to Channel 1 of the oscilloscope.
2. Turn the oscilloscope on and allow at least a 30-minute warm-up time for the AP034 and test equipment before performing the Verification Procedure.
3. Turn on the other test equipment and allow these to warm up for the time period recommended by the manufacturer.
4. While the instruments are reaching operating temperature, make a photocopy of the Performance Verification Test Record (located at the end of this section), and fill in the necessary information.

The warranted characteristics of the AP034 Active Differential Probe are valid at any temperature within the Environmental Characteristics listed in the Specifications. However, some of the other test equipment used to verify the performance may have environmental limitations required to meet the accuracy needed for the procedure. Make sure that the ambient conditions meet the requirements of all the test instruments used in this procedure.

PROCEDURE

Note

*Correct operation of the AP034 controls requires oscilloscope software version 8.1.0 or higher. The use of earlier versions is not recommended. You can verify the software version in the test oscilloscope by pressing the **SHOW STATUS** button, then selecting the **System** menu option. Contact your local LeCroy representative if the software in your oscilloscope requires updating.*



A. Check Gain Accuracy

1. From the oscilloscope display, select the channel that the AP034 is connected to (channel 1), then select the “Coupling” menu. Set the **Coupling** to **DC 1 M Ω** . (If the only choice available is **AC 1 M Ω** , remove the Plug-on AC Coupling adapter from the probe tip.)
2. If necessary, set the probe offset to **0.000 V** by rotating the OFFSET knob in the CHANNEL section of the oscilloscope.
3. Using a BNC female-to-female adapter, connect one end of a BNC cable to the probe end of the ProBus Extension Cable. Connect the Precision 50 Ω Terminator to the other end of the BNC cable.
4. Connect one end of a second BNC cable to the output of the Function Generator. Attach the BNC-to-dual-male banana plug adapter to the free end of the second BNC cable. Connect the banana plugs to the Digital Multimeter (DMM).
5. Set the DMM to measure AC Volts.
6. Set the mode of the Function Generator to Sine Wave; the frequency to approximately 1 kHz; and the output amplitude to approximately 200 mV rms, as measured by the DMM.
7. Record the measured amplitude to 100 μ V resolution in the Test Record.
8. Unplug the output cable from the DMM. Remove the BNC-to-banana plug adapter from the end of the cable.
9. Autobalance the AP034 by pressing the **AUTOBALANCE** menu button located in the “Coupling” menu.
10. Carefully align the four pins that correspond to the **Differential Drive No Termination** portion of the AP03x-CF01 Calibration Fixture with the input receptacles in the AP034 probe head. Press the probe into the fixture to fully engage the pins.
11. Connect the banana plugs of the precision terminator to the digital multimeter (DMM).

Performance Verification

12. Connect the free end of the output cable from the Function Generator to the **Differential Drive No Termination** connector of the AP033/AP034 Calibration Fixture.
13. After the DMM reading has stabilized, record the measured output amplitude to 100 μ V resolution in the Test Record.
14. Divide the measured output voltage (recorded in step A-13) by the sine wave generator output voltage (probe input voltage) from step A-7. Subtract 1.0 from the ratio and multiply the result by 100 to get the error in percent.

$$\%Error = \left(\frac{\text{Measured Output Voltage}}{\text{Input Voltage}} - 1 \right) \times 100$$

15. Record the answer to two significant places ($\pm x.xx\%$) on line A-15 in the Test Record.
16. Verify that the X1 gain error is less than $\pm 2\%$.
17. Disconnect both BNC cables from the test setup.

B. Check High Frequency Common Mode Rejection Ratio (CMRR)

Note

Common Mode Rejection Ratio (CMRR) is defined as the Differential Mode Gain divided by the Common Mode Gain (normalized inverse of the Common Mode response). At frequencies below approximately 250 MHz, the bandwidth-related attenuation in the AP034 Active Differential Probe is so insignificant that the Differential Mode Gain can be assumed to be unity (1.0).

1. Disconnect the ProBus Extension cable from the AP034 and the oscilloscope. Reconnect the AP034 directly to the Channel 1 input of the oscilloscope.
2. Carefully move the AP034 probe head from the **Differential Drive No Termination** connector of the AP033/AP034 Calibration Fixture to the **Common Mode Drive 50 ohm**



Termination connector. Make sure that the probe is fully engaged in the fixture.

3. Set the oscilloscope to display channel 1. In the oscilloscope Channel 1 “COUPLING” menu, set **Coupling** to **DC 1 M Ω** , and **Global BWL** to **Off**. Autobalance the AP034 by pressing the **AUTOBALANCE** menu button twice. Set the oscilloscope trigger mode to **AUTO**.
4. If necessary, center the trace with the Probe Offset (channel OFFSET knob).
5. Connect a BNC cable from the output of the high frequency sine wave generator to the Channel 2 input of the oscilloscope.
6. Set the oscilloscope as follows:

Display	Channel 2 only
Channel 2 VOLTS/DIV	0.5 V/div
Channel 2 Coupling	DC 50 Ω
Trigger on	2
Trigger coupling 2	HF
TIME/DIV	5 ns/div
Acquisition Mode	NORMAL

7. Set the high-frequency sine wave generator frequency to 100 MHz, and the amplitude to approximately 2 V_{p-p}. Set the RF Output to ON.
8. Adjust the oscilloscope trigger level as needed for a stable display.
9. Adjust the output amplitude of the high frequency sine wave generator for a display of exactly 4 divisions (2 V) peak-to-peak. Turn off the RF Output.
10. Move the high frequency sine wave generator output cable from the oscilloscope channel 2 input to the **Common Mode Drive 50 ohm Termination** connector of the AP033/AP034 Calibration Fixture.
11. Set the high-frequency sine wave generator RF Output to ON.

Performance Verification

12. Set the oscilloscope to display channel 1 only, set the trigger source to channel 1, and set the channel 1 vertical scale factor as needed to measure the amplitude of the displayed waveform. Adjust the trigger level as necessary for a stable display. This is the common mode signal. Turn on Math Channel A. Press **MATH SETUP**, then **REDEFINE A**. Set the **A Math** type to **Average**, **Avg Type** to **Continuous**, with **1:15 weighting**, of channel 1. Turn off the trace 1 display.

Note

*The amplitude of the Common Mode signal should be relatively small. If the output waveform appears to be a 1 Volt square wave, check that the **Common Mode Drive 50 ohm Termination** connector of the AP033/AP034 Calibration Fixture is being used and not the **Differential Drive 50 ohm Termination** connector.*

13. Measure the peak-to-peak output amplitude of the AP034. Record the reading to two-digit resolution (xx mV) as "Common Mode Signal at 100 MHz" in the Test Record.
14. Calculate the Common Mode Rejection Ratio (CMRR) at 100 MHz by dividing 2,000 mV by the measured Common Mode Signal recorded in step B-14 (direct reciprocal of the Common Mode Gain). Record the result to two-digit resolution (xx:1) in the Test Record.
15. Verify that the CMRR at 100 MHz is greater than 18:1 (25 dB).
16. Turn off the high frequency sine wave generator RF output, and disconnect the output cables.



C. Check Low Frequency CMRR

Note

Because greater amplitudes are required to measure the higher CMRR specifications at low frequencies, the Function Generator will be used in place of the high-frequency sine wave generator for the low frequency CMRR test.

1. Carefully move the AP034 probe head from the **Common Mode Drive 50 ohm Termination** connector of the AP033/AP034 Calibration Fixture to the **Common Mode Drive No Termination** connector. Make that sure the probe is fully engaged in the fixture.
2. Set the oscilloscope to display channel 2, the channel 2 input coupling to DC1 M Ω , the channel 2 vertical scale to 5 Volt/div, the horizontal scale to 5 ms/div, and the trigger source to channel 2. Set BW limiting on channels 1 and 2 to 25 MHz.
3. Connect the BNC Tee adapter to the output connector of the Function Generator. Connect a BNC cable from one end of the BNC Tee adapter to channel 2 of the oscilloscope. Connect a second BNC cable from the remaining end of the BNC Tee adapter to the **Common Mode Drive No Termination** input connector of the AP033/AP034 Calibration Fixture.

Caution

*Make sure that the **Common Mode Drive No Termination** connection is used. Prolonged application of the power levels used in the low frequency common mode test may damage the termination resistance in either 50 ohm Termination input of the AP033/AP034 calibration fixture.*

Performance Verification

4. Set the sine wave generator frequency to 70 Hz, and the output amplitude to $20 V_{p-p}$, (4 divisions on the oscilloscope). If necessary, adjust the trigger level for a stable display.
5. Set the oscilloscope to display channel 1, but leave the trigger source set to channel 2. Set the vertical scale of channel 1 to 2 mV/div. Create a math waveform on channel A defined as the Average of channel 1. Set the average factor as necessary to reduce noise. Increase the zoom to a factor of four (0.5 mV/division). Turn off the waveform display of all channels except the **A Math** waveform.
6. Increase the zoom of the **A Math** waveform as needed to measure the peak-to-peak amplitude. This is the common mode signal.
7. Record the displayed “Common Mode Signal at 70 Hz” to two-digit resolution (x.xx mV) in the Test Record.
8. Calculate the Common Mode Rejection Ratio (CMRR) at 70 Hz by dividing 20 000 mV by the measured Common Mode Signal recorded in step C-7 (direct reciprocal of the Common Mode Gain). Record the result to two-digit resolution (xx 000:1) in the Test Record.
9. Verify that the “Common Mode Rejection Ratio at 70 Hz” is greater than 10000:1 (80 dB).
10. Change the output amplitude of the Function Generator to approximately $8.0 V_{p-p}$, and the frequency to 1 MHz.
11. Set the oscilloscope to display channel 2 only. Change the horizontal scale factor to $0.5 \mu\text{s}/\text{div}$, and the channel 2 vertical scale to 2 V/div. Turn the BWL on channels 1 and 2 to 200 MHz.
12. Adjust oscilloscope trigger level as necessary for a stable display. Adjust the Function Generator amplitude as needed to maintain $8.0 V_{p-p}$ as measured on channel 2.
13. Turn off the oscilloscope channel 2 display, turn on the display of channel 1 and the **A Math** waveform (averaged channel 1). Adjust the scale factor of channel 1 and the Zoom of the **A Math** waveform as necessary to accurately measure the amplitude of the averaged signal.



AP034 Active Probe

14. Record the displayed “Common Mode Signal at 1 MHz” to two-digit resolution in the Test Record.
15. Calculate the “Common Mode Rejection Ratio (CMRR) at 1 MHz” by dividing 8000 mV by the measured Common Mode Signal recorded in step C-14. Record the result in the Test Record.
16. Verify that the Common Mode Rejection Ratio at 1 MHz is greater than 100:1 (40 dB).
17. Remove all cables and test fixtures from the AP034 probe.

This completes the Performance Verification of the AP034. Complete and file the results recorded in the AP034 Performance Verification Test Record, as required by your quality procedures. Apply a suitable calibration label to the AP034 housing as required.

#

Performance Verification

AP034 Performance Verification Test Record

This record can be used to record the results of measurements made during the performance verification of the AP034 Active Differential Probe.

Photocopy this page and record the results on the copy. File the completed record as required by applicable internal quality procedures.

The section in the test record corresponds to the parameters tested in the performance verification procedure. The numbers preceding the individual data records correspond to the steps in the procedure that require the recording of data. Results to be recorded in the column labeled "Test Result" are the actual specification limit check. The test limits are included in all of these steps. Other measurements and the results of intermediate calculations that support the limit check are to be recorded in the column labeled "Intermediate Results."

Permission is granted to reproduce these pages for the purpose of recording test results.

Model: _____ AP034 _____

Serial Number: _____

Asset or Tracking Number: _____

Date: _____

Technician: _____

EQUIPMENT USED:

	MODEL	SERIAL NUMBER	CALIBRATION DUE DATE
OSCILLOSCOPE			
DIGITAL MULTIMETER			
HF SINE WAVE GENERATOR			
FUNCTION GENERATOR ¹			N/A

¹ The function generator provides stimulus for making relative measurements. The output amplitude of the generator is measured with the DMM or oscilloscope in the procedure. Thus, the generator is not required to be calibrated.



AP034 PERFORMANCE VERIFICATION TEST RECORD

Step	Description	Intermediate Data	Test Result
Gain Accuracy			
A-7	Sine Wave Generator Output Voltage	_____ mV	
A-13	Probe Output Voltage	_____ mV	
A-15	Gain Error (Test Limit $\leq \pm 2\%$)		_____ %
High Frequency Common Mode Rejection Ratio (CMRR)			
B-13	Common Mode Signal at 100 MHz	_____ mV	
B-15	CMRR at 100 MHz (Test Limit $\geq 18:1$)		_____ :1
Low Frequency Common Mode Rejection Ratio			
C-7	Common Mode Signal at 70 Hz	_____ mV	
C-8	CMRR at 70 Hz (Test Limit $\geq 10\,000:1$)		_____ :1
C-14	Common Mode Signal at 1 MHz	_____ mV	
C-15	CMRR at 1 MHz (Test Limit $\geq 100:1$)		_____ :1

Notes: _____



Adjustment Procedure

INTRODUCTION

You can use this procedure to adjust the AP034 Active Differential Probe to meet the warranted specifications. This procedure should only be performed if the instrument fails the Performance Verification tests.

If the probe cannot be adjusted to meet the Performance Verification limits, repair may be necessary.

To ensure instrument accuracy, check the calibration of the AP034 Active Differential Probe every year. Before calibration, thoroughly clean and inspect this unit as discussed in the "Cleaning" section.

Completion of each step in the Adjustment Procedure ensures that the differential probe meets specifications. Some of the adjustments interact with other parts of the circuitry. Therefore, it is necessary that all adjustments be performed in the order listed. For best overall instrument performance, make each adjustment to the exact setting, even when adjustment is within the limits stated in the procedure.

Adequate guard bands were designed into the AP034 Active Differential Probe to ensure that it will meet or exceed published specifications over the entire operating temperature range. To continue to meet the environmental specifications, all adjustments must be performed in a controlled environment with an ambient temperature of 25 ± 5 °C. The AP034 Active Differential Probe must also be at stable operating temperature before performing adjustments.

Caution

The adjustment procedure will require removal of the probe covers. These covers are part of the ESD protection system of the AP034 Active Differential Probe. To protect the probe, you should perform the entire procedure on a static dissipating work surface. Wear an antistatic



grounding wrist strap and follow standard static control procedures.

The probe tip housing provides physical rigidity to the input pins of the probe. When the covers are removed, observe extra caution to avoid breaking the probe tip receptacles when mating the probe to the calibration fixture.

TEST EQUIPMENT REQUIRED

The table on the next page lists the test equipment and accessories, or their equivalents, that are required for complete calibration. Specifications given for the test equipment are the minimum necessary for accurate calibration. All test equipment is assumed to be correctly calibrated and operating within the specifications listed. Detailed operating instructions for the test equipment are not given in this procedure. Refer to the test equipment manual if more information is needed.

If alternate test equipment is substituted, control settings or calibration equipment setups may need to be altered. Alternate models of test equipment may have different connector styles requiring adapters not included in the equipment list.

Adjustment Procedure

TABLE 4. Test Equipment and Accessories

Description	Minimum Specifications	Test Equipment Examples
Wide Band Oscilloscope	500 MHz bandwidth 2 mV to 200 mV vertical scale factors ProBus interface equipped* 2% vertical accuracy	LeCroy LT342 LeCroy LC344A
Digital Multimeter	0.1% DC volts accuracy at 0.4 V 0.2% AC volts accuracy at 2 V and 1 kHz 5½ digit resolution 0.01 mV AC volts resolution	Agilent Technologies 34401A Fluke 8842A-09 Keithley 2001 with test leads
Function Generator	Sine and square wave output 20 V _{p-p} into 1 MΩ 50 Hz to 1 MHz frequency range Sync. or Freq. Reference output	Agilent Technologies 33120A Stanford Research Model DS340 Leader LAG-120B
Fast Rise Pulse Generator	Risetime < 2 ns Amplitude > 400 mV into 50 Ω Over/Undershoot < 6%	Calibrator signal from LeCroy oscilloscope Tegam / Tektronix PG506 with power unit
Sine Wave Generator	Output 250 MHz at 1 V rms	Agilent Technologies 8648C, with male N to female BNC adapter for the output connector Tegam SG504 with TM series mainframe.
DC Voltage Source	0 to 2 VDC regulated output, settable to 1 mV resolution	HP 6633A
Termination, precision	50 Ω ±0.05%	LeCroy TERM-CF01
Termination, BNC	50 Ω through, male-female	Pomona 4119-50
Calibration Fixture	ProBus Extension Cable	LeCroy PROBUS-CF01
Calibration Fixture	AP033/AP034 Calibration Fixture	LeCroy AP03X-CF01

TABLE 4. Test Equipment and Accessories

Description	Minimum Specifications	Test Equipment Examples
BNC coaxial cable (2 required)	male-male BNC, approx. 1 m	Pomona 5697-36
BNC Tee Adapter	female-male-female	Pomona 3285
Banana Plug Adapter (2 required)	BNC female-to-dual male banana plug	Pomona 1269
Shorting Plug	Two 0.025 in. square pins on 0.100 in. centers	Supplied with AP03X-CF01
Adjustment Tool	0.025 in. square tip	Johanson 4192
Low Capacitance Screwdriver		

*** Notes**

If a LeCroy ProBus equipped oscilloscope is not available, you may perform the adjustment procedure with an alternate oscilloscope that meets the other Minimum Specifications, and the model ADPPS power supply. The input termination of the oscilloscope must be set to 50 Ω , the offset or position must remain at center screen, and the high-frequency adjustments must be performed with the ADPPS connected directly to the input of the oscilloscope.

PRELIMINARY PROCEDURE

1. Using pliers, carefully remove each of the push buttons from the ProBus interface housing by gently pulling them away from the housing.
2. Remove the two screws that secure the plastic cover on the cable end of the ProBus interface housing. Gently pull on the probe cable to slide the circuit board assembly from the metal housing.
3. Remove the 5/64 in. (2 mm) Allen head cap screw from the small cover on the back of the probe tip. Remove the cover along with the small cover on the opposite side of the probe. Hold the shielded portion of the probe head in one hand and

Adjustment Procedure

gently slide the larger cover off by pulling it away from the probe tip end.

4. Connect the AP034 Active Differential Probe output to the female end of the ProBus Extension Cable. Be careful to align the ProBus pins with the corresponding connector correctly. Connect the male end of the ProBus Extension Cable to Channel 1 of the oscilloscope.

Note

The Logic board is connected to the Amplifier board by four small 8-pin connectors. There are no additional mechanical fasteners holding the two boards together. A small foam pad mounted on the circuit board ensures that the connectors remain engaged while the assembly is mounted within the ProBus interface housing. Be sure that the connectors between the boards are firmly engaged before applying power to the probe. Operating the probe without the logic board will not damage it. However, to ensure reliable operation, the logic board should only be mated with the Amplifier board with the power removed, and the ProBus connector disengaged.

5. Apply power to the oscilloscope and to the other test instrumentation. Allow at least 30 minute's warm-up time for the AP034 Active Differential Probe and test equipment before continuing the calibration procedure.

Note

The probe tip cover also serves to thermally stabilize the input circuitry. The differential input stage of the probe utilizes discrete transistors that need to maintain an approximate match of junction temperatures for correct DC balance. With the covers removed, this circuitry is susceptible to drift caused by air currents flowing over the



AP034 Active Probe

components. Remove or redirect any fans that may be blowing air currents over the probe tip during adjustment.

Note

*Correct operation of the AP034 Active Differential Probe controls requires software version 8.1.0 or higher. You can find out the software version loaded on your LeCroy scope by pressing **SHOW STATUS**, then selecting the **System** menu option.*

*In version 8.1.0 and higher, the **OFFSET** controls on the front panel of the probe are disabled. Offset is controlled by the **OFFSET** knob in the oscilloscope **CHANNEL** section.*

Adjustment Procedure

PROCEDURE

A. Adjust Coarse DC Balance (R226)

1. If necessary, set the probe offset to **0.000 V** by rotating the OFFSET knob in the CHANNEL section of the oscilloscope.
2. Insert the two-pin shorting plug into the socket on the Logic Board. Use the two holes closest to the probe cable (Figure 9).

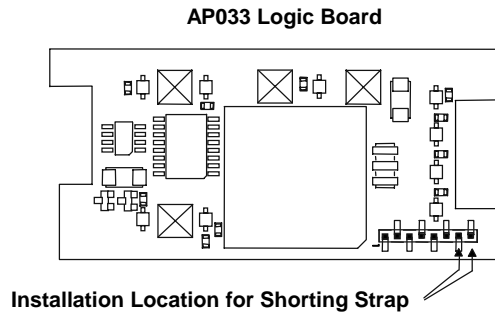


Figure 9.

3. To enter the Cal Mode, push either of the two offset buttons that protrude through holes in the Logic Board.
4. Plug the precision 50 Ω terminator into the DMM input. Set the DMM to measure DC volts.
5. Using a low capacitance screwdriver, adjust **Coarse DC Bal** (R226) on the Amplifier Board for an output voltage of 0 mV \pm 10 mV (Figure 10).

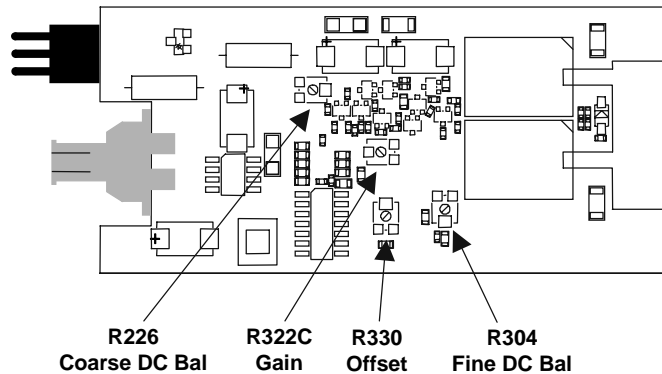


Figure 10. Amplifier Board Adjustment Locations

B. Adjust Fine DC Balance (R304)

1. Remove the shorting plug from the Logic Board.
2. Reinsert the shorting plug into the two holes near the end of the Logic Board. (Figure 9.)
3. Reenter Cal Mode by pushing either of the two buttons that protrude through holes in the Logic Board.
4. Remove the BNC cable from the precision 50 Ω terminator connected to the DMM.
5. Short the output BNC connector by reconnecting the cable to the **SHORT** connector on the AP033/AP034 Calibration Fixture. The **SHORT** connector is the only BNC connector on the AP033/AP034 Calibration Fixture that does not have corresponding input pins for the probe tip. It is located on the end of the board beyond the Common Mode Terminated connector.
6. In Cal Mode, the **EFFECTIVE GAIN** indicators serve as an adjustment indicator. The **EFFECTIVE GAIN** indicators are located on the Logic Board (Figure 11). It may be necessary to hold the boards in your hands to see the indicators while making the adjustment.

Adjustment Procedure

- Using a low capacitance screwdriver, adjust **Fine DC Balance** (R304) until the **±10 EFFECTIVE GAIN** indicator lights (Figure 11).

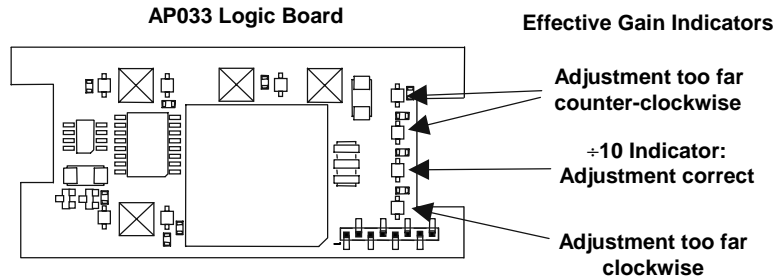


Figure 11. ±11 Effective Gain Indicator

- Disconnect the BNC cable from the short connector. Remove the shorting plug from the logic board.

C. Adjust Low Frequency CMRR (R7)

- Leave the BNC cable connected to the probe end of the ProBus extension cable. Connect a 50 Ω BNC Through Terminator on the other end of the BNC cable. Connect the male end of the 50 Ω terminator to channel 3 on the scope. The scope end of the ProBus extension cable should remain connected to channel 1 of the scope, although there is no signal cable connected.
- Connect a BNC cable from the output of the Function Generator to the Channel 2 input of the oscilloscope.
- Connect a second BNC cable from the Function Generator **SYNC OUT** to the external trigger input of the oscilloscope.
- Set the Function Generator waveform to **Sine** and the frequency to **70 Hz**.



5. Set the oscilloscope as follows:
 - Display: Channel 2
 - Channel 1 VOLTS/DIV: 2 mV/div
 - Channel 2 VOLTS/DIV: 5 V/div
 - Channel 2 Coupling: DC1M Ω
 - Channel 3 VOLTS/DIV: 2 mV/div
 - Channel 3 Coupling: AC 1M Ω
 - Trigger on: EXT10
 - cplg EXT10: DC
 - TIME/DIV: 10 ms/div
 - Acquisition Mode: NORMAL
6. Adjust the trigger level for a stable display.
7. Set the Function Generator output voltage to 20 V_{p-p} as displayed on the oscilloscope.
8. Disconnect the output cable of the function generator from the channel 2 input of the oscilloscope and reconnect it to the **Common Mode Drive No Termination** connector of the AP033/AP034 Calibration Fixture.
9. Carefully align the four pins that correspond to the **Common Mode Drive No Termination** portion of the AP033/AP034 Calibration Fixture with the input receptacles in the AP034 probe head. Press the probe into the fixture to fully engage the pins.
10. Set the oscilloscope to display channel 3. The waveform is the common mode signal. Turn the offset as necessary to keep the trace on screen. Turn on Math Channel A. Press **MATH SETUP**, then **REDEFINE A**. Set the **A Math** type to **Average, Avg Type to Continuous, with 1:15 weighting, of channel 3**. Turn off the trace 3 display. Use the Math Zoom and Position controls as necessary to view the waveform.
11. Adjust **LF CMRR (R7)** for minimum amplitude. (See Figure 12 for location.)

Adjustment Procedure

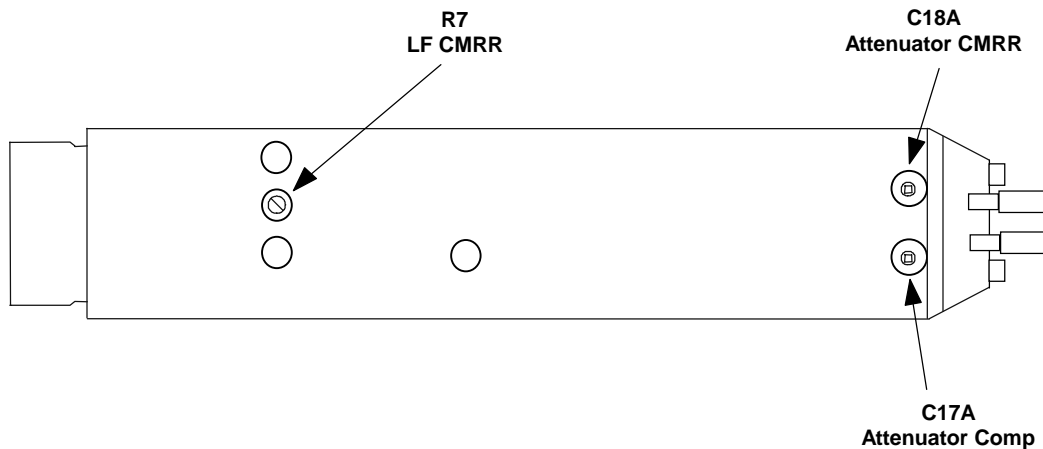


Figure 12. Probe Tip Adjustment Locations

12. Remove the BNC cable from the output of the Function Generator and the calibration fixture. Leave the BNC cable from the SYNC output to the oscilloscope external trigger input in place.

D. Adjust OFFSET (R330)

1. Reconnect the BNC cable to both ends of the ProBus extension cable. The oscilloscope end of the extension cable should still be connected to channel 1.
2. Set the oscilloscope channel 1 scale factor to **10 mV/div**, and the acquisition mode to **Auto**. Set the BWL to **20** or **25 MHz**. Adjust the OFFSET to **0.0 mV**
3. Carefully move the AP034 probe tip from the **Common Mode Drive No Termination** position of the AP033/AP034 Calibration Fixture to the **Differential Drive No Termination** position. Press the probe into the fixture to fully engage the pins.
4. Connect female BNC-to-dual male banana plug adapters to each end of the BNC cable. Plug one end into the output of the DC voltage source, making sure the plug corresponding to the BNC shield (marked "Ground") is connected to the voltage source **-Output** (or **common** for dual supplies) connector, and the other pin on the **+Output** connector.



5. Connect the other end of the cable to the DMM input, making sure that the plug corresponding to the BNC shield (marked "Ground") is connected to the **LO** or **COM** input.
6. Set the DC Voltage Source to read as close as possible to **+1.600 V** on the DMM.
7. Autobalance the AP034 by pressing the **AUTOBALANCE** menu button located in the "COUPLING" menu twice, or by pressing and holding both probe offset buttons for at least two seconds.
8. Disconnect the BNC cable from the female BNC-to-dual male banana plug adapter on the DMM.
9. Reconnect the BNC cable from the DC Voltage Source to the **Differential Drive No Termination** connector on the AP033/AP034 Calibration Fixture.
10. Set the probe offset to **-1.600 V** by rotating the **OFFSET** knob in the channel section of the oscilloscope.
11. Allow 10 seconds for the AP034 to stabilize.
12. Using a low capacitance screwdriver, adjust **Offset** (R330) to bring the trace back to exactly center screen. (See Figure 10 for adjustment location.)
13. Remove the dual banana plug adapter from the output of the DC voltage source and reconnect it, with the pins reversed. (The plug corresponding to the BNC shield (marked "Ground") should now be connected to the **+Output** connector.)
14. In the CHANNEL menu of the oscilloscope, set the probe offset to **+1.600 V** by rotating the OFFSET knob.
15. Allow 10 seconds for the AP034 to stabilize.
16. Note the amplitude of the trace from center screen.
17. Adjust **Offset Cal** (R330) to position the trace to approximately $\frac{1}{2}$ the amplitude from center screen noted in the previous step. This amplitude should be within ± 10 mV of center screen. Note this value.

Adjustment Procedure

18. Again, remove the dual banana plug adapter from the output of the DC voltage source and reconnect it, with the pins reversed. The plug corresponding to the BNC shield (marked "Ground") should now be connected to the – or **Common** Output connector.
19. In the CHANNEL menu of the oscilloscope, set the probe offset to **–1.600 V** by rotating the OFFSET knob.
20. Allow 10 seconds for the AP034 to stabilize.
21. The trace should be offset from the center line by the same amplitude but opposite polarity of the value noted in step E-16.
22. Repeat steps E-13 through E-21 as necessary until the errors at +1.6 V and at –1.6 V are approximately equal, and both are within 10 mV of the center scale. Reverse the polarity of the dual banana plug adapter at the output of the DC voltage source, and the corresponding probe offset value with each repetition.
23. Disconnect the cable from the DC Voltage Source. Keep the AP033/AP034 Calibration Fixture connected to the AP034 for the next step.

E. Adjust GAIN (R322C)

1. Set the AP034 offset to **0.000 V** by rotating the OFFSET knob in the CHANNEL section of the oscilloscope.
2. Disconnect the BNC cable from the oscilloscope end of the ProBus extension cable. Reconnect this end of the cable to the precision 50 Ω termination.
3. Connect one end of a second BNC cable to the output of the Function Generator. Connect the BNC-to-dual male banana plug adapter to free the end of the BNC cable. Insert the banana plugs of the adapter into the input terminals of the Digital Multimeter (DMM).
4. Set the DMM to measure AC volts.
5. Set the mode of the Function Generator to Sine Wave, the frequency to approximately 1 kHz and the output amplitude to read approximately 190 mV on the DMM.

6. Record the DMM reading. Be careful not to alter the output amplitude of the generator after the measured value has been recorded
7. Remove the banana plug adapter and connect the free end of the cable to the **Differential Drive no Termination** connector on the calibration fixture.
8. Connect the AP034 Output cable with 50 Ω Precision termination to the DMM.
9. Using a low capacitance screwdriver, adjust **GAIN** (R322C) so that the DMM reading is within ± 1 mV (0.5%) of the reading recorded in step E-6. (See Figure 10 for adjustment location.)
10. Disconnect the Function Generator, DMM, calibration fixture, and precision 50 Ω terminator.

F. Adjust Final Attenuator Compensation (C17)

Note

The calibrator signal from a LeCroy oscilloscope is the recommended signal source for this adjustment. If another oscilloscope is being used for this procedure, make sure that the square wave source has adequate flatness (minimum overshoot and undershoot.)

1. Press the UTILITIES button, then select the **CAL BNC Setup** menu. Set the **mode** to **CAL signal**, **Shape** to **Square**, **Amplitude** to **1 V** into 1 M Ω , and **Frequency** to **1 kHz**.
2. Reconnect the free end of the ProBus Extender BNC cable to the oscilloscope end of the extender located on channel 1.
3. Connect a BNC cable from the CAL output BNC connector to the **Differential Drive 50 ohm Termination** connector on the AP033/AP034 Calibration Fixture.
4. Carefully connect the **Differential Drive 50 ohm Termination** portion of the AP033/AP034 Calibration

Adjustment Procedure

Fixture to the probe tip. Press the probe into the fixture to fully engage the pins.

5. Set the oscilloscope display to channel **1**, vertical scale factor to **50 mV/div** and the horizontal scale to **1 μ s/div**. Set the trigger source to channel **1**, and Slope to **Positive**. Adjust the oscilloscope trigger level as necessary for a stable display.
6. Using the OFFSET control, move the trace down until the top portion of the waveform is centered.
7. Using the 0.25 in. square adjustment tool, adjust **Attenuator Comp** (C17A) for a flat top waveform. (See Figure 12 for adjustment location.)
8. Remove the cable from the CAL output connector on the scope.

G. Adjust Final Attenuator CMRR (C18A)

1. Carefully move the AP033 probe head from the **Differential Drive 50 ohm Termination** portion of the AP033/AP034 Calibration Fixture to the **Common Mode Drive 50 ohm Termination** portion.
2. Remove the BNC cable from the **Differential Drive 50 ohm Termination** connector of the AP033/AP034 Calibration Fixture. Connect one end of the BNC cable to the **Common Mode Drive 50 ohm Termination** connector of the AP033/AP034 Calibration fixture. Connect the other end of the cable to the female end of a BNC Tee adapter. Plug the male connector of the BNC Tee adapter into the channel 4 input of the oscilloscope. Connect a second BNC cable to the remaining female connector of the BNC Tee adapter. Connect the other end of the second BNC cable to the CAL output BNC connector.
3. Set the oscilloscope display to channel **4**, coupling to **DC1M Ω** , vertical scale factor to **200 mV/div**, and the trigger source to channel **4**. Adjust the oscilloscope trigger level as necessary for a stable display.
4. Set the oscilloscope to display channel **1**, and vertical scale factor to **10 mV/div**. Set the **OFFSET** to **0.0 mV**



5. Adjust **Attenuator CMRR** (capacitor C18A) for minimum amplitude shift of the displayed waveform at the trigger point in time. See Figure 10 for adjustment location.
6. Leave the setup connected for the next step.

H. Assemble Probe and Amplifier

1. Carefully slide the large probe tip cover over the probe tip, being careful to engage the input pins.
2. Snap the small probe cover with the threaded brass insert onto the bottom of the probe. Engage the probe cable strain relief into the mating area of the cover. Carefully dress the wires entering the cable to clear the area above the brass insert.
3. Place the lip on the large end of the remaining cover under the mating surface near the probe tip. Gently press the cover into place. If the cover appears not to close completely, remove it and again check for adequate clearance between the brass insert and the cable wires.
4. Replace the $\frac{5}{64}$ in. Allen cap screw and tighten.
5. Hold the Logic Board/Amplifier Board assembly in one hand with the Logic board facing up. Hold the ProBus Interface housing in the other hand with the control side (side with holes for the buttons) facing up.
6. Align the edges of the Amplifier Board with the slots in the center of the inside of the housing. (The amplifier board is the thicker circuit board and has the BNC connector soldered to it.) Slide the boards into the housing, being careful to align the screw holes in the end cover with the corresponding channels in the corners of the housing.
7. Insert and tighten the two screws that secure the end panel to the ProBus interface housing. Avoid overtightening the screws because the cover may warp.
8. Replace the four push button caps, pressing each fully to seat the cap on the button shaft.

Adjustment Procedure

I. Attenuator Matching and Final Check

1. Repeat the Performance Verification procedure to ensure compliance with the warranted specifications.
2. Perform the Attenuator Matching Procedure listed on page 5-8. Apply calibration seals in accordance with your quality procedures.

This concludes the Adjustment Procedure. Repeat the Performance Verification procedure to complete the calibration of the AP034.

#



BLANK PAGE



Specifications

The following specifications are valid for model AP034 probes after the probe has reached operating temperature. This takes 20 minutes with power applied, in an environment with stable ambient temperature. The probe must be operating within the environmental conditions listed in the General Characteristics section, and must have been calibrated within the past 12 months in an ambient temperature of 23 ± 5 °C.

NOMINAL CHARACTERISTICS

Nominal characteristics describe parameters and attributes that are guaranteed by design, but do not have associated tolerances.

Input Configuration:	True Differential (+ and – Inputs); with shield Ground connector.
Effective Gain ¹ :	X1, $\div 10^1$, $\div 20^1$
Input coupling:	DC. AC Coupling obtained by installing AC Coupling Adapter.
Differential Mode Range:	± 400 mV ($\div 1$ Attenuation) ± 4 V ($\div 10$ Attenuation ¹) ± 8 V ($\div 100$ Attenuation ¹)
Common Mode Range:	± 16 V ($\div 1$ Attenuation) ± 42 V ($\div 10$ Attenuation ¹) ± 42 V ($\div 20$ Attenuation ¹)
Maximum Input Voltage:	± 42 V either input from ground



WARRANTED ELECTRICAL CHARACTERISTICS

Warranted characteristics are parameters with guaranteed performance. Unless otherwise noted, tests are provided in the Performance Verification Procedure for all warranted specifications.

LF Gain Accuracy: 2% into 50.0 Ω load²,
measured at 1 kHz

Common Mode Rejection Ratio³: (probe head grounded, DC
coupled without attenuator)

70 Hz \geq 80 dB
1 MHz \geq 40 dB
100 MHz \geq 25 dB

Notes: ¹ \pm 10 and \pm 20 obtained with external plug-on attenuators

² Output impedance is 50 Ω , intended to drive 50 Ω . Add uncertainty of termination impedance to accuracy.

³ LeCroy measures CMRR with a fixture that connects the probe tip ground to the signal source ground. This method is necessary to obtain a reproducible CMRR measurement.

Often, users leave the probe tip ungrounded when measuring high frequency signals. Not grounding the probe tip can actually improve CMRR by allowing some of the common mode signal to be impressed across the entire length of the probe cable instead of from probe tip to probe ground. The CMRR improvement obtained without grounding the probe tip depends on proximity to probe cable ground; therefore, it is nonreproducible.

LeCroy has chosen to use a reproducible method of measurement, rather than obtain a more optimistic measurement.

TYPICAL ELECTRICAL CHARACTERISTICS

Typical characteristics are parameters with no guaranteed performance. Tests for typical characteristics are not provided in the Performance Verification Procedure.

Bandwidth, probe only

(–3 dB): DC to 1 GHz

Output Zero: < 3 mV within 30 minutes
of autobalance

Residual Autobalance

Offset: $\leq 100 \mu\text{V}$ referred to input with X1
effective gain

Differential Offset

Range: $\pm 1.6 \text{ V}$ (± 1 Attenuation)
 $\pm 16 \text{ V}$ (± 10 Attenuation)
 $\pm 42 \text{ V}$ (± 20 Attenuation)

CMRR: See Figure 13.

Input Resistance

(each side to ground): 1 M Ω

Input Capacitance

(between inputs): < 0.85 pF (See Figure 1.)

Input Capacitance

(each side to ground): < 1.5 pF (See Figure 1.)

Noise

(referred to input,

10 to 1000 MHz): 35 nV/ $\sqrt{\text{Hz}}$ (± 1 Attenuation)
350 nV/ $\sqrt{\text{Hz}}$ (± 10 Attenuation)
700 nV/ $\sqrt{\text{Hz}}$ (± 20 Attenuation)

Output Impedance: 50 Ω nominal. Intended to drive 50 Ω

Harmonic Distortion

3rd order distortion: –60 dB below fundamental (200 mV_{p-p}
output, at 100 MHz)

3rd order intercept: +20 dBm (at 100 MHz at output)

AC Coupling LF Cutoff

(–3 dB): 16 Hz (using plug-on AC coupler)

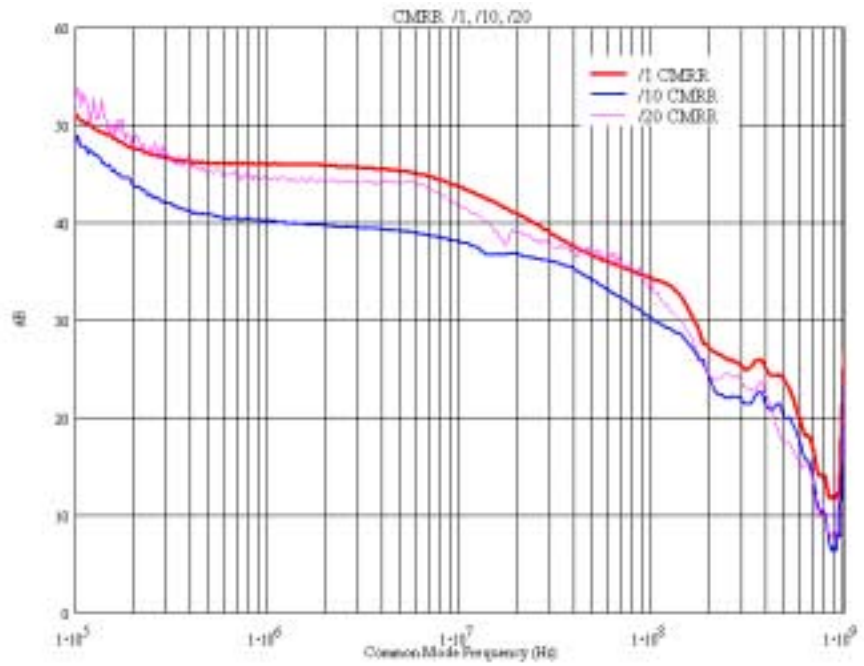


Figure 13. Typical CMRR Graphs

GENERAL CHARACTERISTICS

Temperature: 0 to 50 °C (operating)
–40 to 75 °C (storage)

Input Connectors: compatible with 0.025 in. (0.635 mm)
square pins
0.036 in. (0.91 mm) maximum
diameter (for round pins)

Power Requirements: powered from oscilloscope through
ProBus interface or with ADPPS
power supply

Dimensions:

Control Housing:	Length:	3.625 in.	(9.2 cm)
	Width:	1.50 in.	(3.8 cm)
	Height:	1.00 in.	(2.5 cm)
Head:	Length:	4.0 in.	(10.1 cm) w/o Attenuator or AC Coupler
	Width:	2.25 in.	(2.25 cm)
	Height:	0.625 in.	(1.6 cm)
Cable:	Length:	42 in.	(106 cm)
	Diameter:	0.275 in.	(7.0 mm)
Weight:	Probe only:	6.4 oz	(0.18 kg)
	Shipping:	2 lbs, 8.4 oz	(1.15 kg)



COMPLIANCE AND CERTIFICATIONS

- EC Declaration of Conformity: Conforms to EMC Directive 89/335/EEC for electromagnetic emission and immunity requirements.
- EN 55011:1997: The probe has been tested to verify compliance with this standard, Class B for Conducted and Radiated Emissions.
- NE 50082-1:1997: The probe has been tested to verify compliance with this standard for ESD, Radiated Immunity, EFT/Burst Immunity, Fast Surge Immunity, Conducted Immunity, and Voltage Sags & Interruptions. The line-related tests were performed with a model ADPPS Probe Power Supply.
- Conforms to Low Voltage Directive 73/23/EEC for product safety.
- The probe has been designed to comply with EN 61010-1 Installation Category I, 42.4 V, Pollution Degree 1.

OPERATOR SAFETY

The probe is intended to be used only with instruments that are connected to earth ground through the input BNC connector. When you are using a ADPPS Power Supply Adapter, make sure that the adapter is connected to a BNC connector that is grounded by the test instrument before connecting the probe inputs to the test circuit.

Do not use in wet or explosive atmospheres. Remove any contamination from the probe housing before connecting the probe inputs to any circuit. Make sure that the surface of the probe head is completely dry before connecting the inputs.

The use of the probe and/or the instrument it is connected to in a manner other than specified may impair the protection mechanisms.

Do not use the probe if any part is damaged. All maintenance should be referred to qualified service personnel.

STANDARD ACCESSORIES

Hard Case

÷10 Plug-on Attenuator

÷20 Plug-on Attenuator

Plug-on AC Coupler

Probe Connection Accessory Kit:

Flex Lead Set (1)

Mini Clip, 0.8 mm (3)

Mini Clip, 0.5 mm (2)

Ground Lead (1)

Offset Pins, Round (4)

Square Pin Header Strip (1)

Manual, AP034 Active Differential Probe Instruction

OPTIONAL ACCESSORIES

ADPPS Power Supply

OSCILLOSCOPE SOFTWARE COMPATIBILITY

For full control functionality of the probe, the LeCroy oscilloscope must have software version 8.1.0 or higher loaded. The software version installed in a LeCroy oscilloscope can be verified by pressing the **SHOW STATUS** button on the front panel, then selecting the **System** menu choice. The probe can be used with earlier versions of software; however, probe offset can only be controlled through the buttons on the probe body. Also, the scale factor will be displayed incorrectly in some modes.

If required, contact your local LeCroy representative for information on upgrading the software in your oscilloscope.

#



BLANK PAGE